

DO NOT OPEN THIS BOOKLET UNTIL YOU ARE ASKED TO DO SO



ENTRANCE EXAMINATION - VIITH
DEFENCE CAREER ACADEMY,
AURANGABAD.

As an ISO 9001 : 2008 - Certified

ENT : 2013

SR. NO.

TIME ALLOWED : 2.00 HOURS

TOTAL MARKS : 100

QUESTION - BOOKLET

GENERAL INSTRUCTIONS

* ***Read instructions given below carefully for solving this question paper.***

1. This question paper has 90 questions. Each question carries 1 mark.
2. **Last** two descriptive questions are **compulsory**. They carry 5 marks each.
3. There is a separate answer-sheet to write the answers. Each question has four options. Options are ABCD out of the four any one of the options is the correct answer. Shade the correct answer in the answer-sheet.

Example : If the correct answer for Q. NO 6. is **B**, then record your answer as follows:

Question No. 6
A B C D

4. Answer recorded in any other form will not be considered. Such answers will be marked 'zero'.

Example :
A B C D

5. Answer should be written using a pencil only. Blue or black ball pen or ink-pen will not be accepted.
6. Answers once marked cannot be changed or rewritten.
7. Any kind of cancellation or answers recorded marked in more than one circle will not be considered.
8. The exam has limited time, in case you are not able to solve a question, kindly solve the next question. If time permits you can try to solve the unsolved questions.
9. Essay must be written at the back portion of the Answer paper.
10. Result of this examination will be displayed on the Notice Board.
11. Do not write or mark anything on the question paper.

DO NOT OPEN THIS BOOKLET UNTIL YOU ARE ASKED TO DO SO

Q.1. to 3 : Read the following passage carefully and answer the questions choosing the correct option.

Punctually at midday he opened his bag and spread out his professional equipment, which consisted of a dozen cowrie shells, a square piece of cloth with obscure mystic charts on it, a note book, and a bundle of Palmyra writing. His forehead was resplendent with sacred ash and vermilion, and his eyes sparkled with a sharp abnormal gleam which was really an outcome of a continual searching look for customers, but which his simple clients took to be a prophetic light and felt comforted. The power of his eyes was considerably enhanced by their position placed as they were between the painted forehead and the dark whiskers which streamed down his cheeks : even a half-wit's eyes would sparkle in such a setting. To crown the effect he wound a saffron-coloured turban around his head. This colour scheme never failed People were attracted to him as bees are attracted to cosmos or dahlia stalks.

1. From the description of this passage one can make out the person to be a
a) snake charmer b) footpath vendor c) astrologer d) priest
2. The eyes of the person described sparkled because
a) he was sitting under midday sun
b) he was always looking for possible clients
c) his forehead was bright with ash and vermilion
d) he was full of joy
3. The person opened his bag
a) to search for something he needed b) to indicate the start of his work
c) to keep his professional equipment d) to take out things for display

Q.4. to 7 : Read the following poem carefully and answer the questions choosing the correct option.

I saw a fishpond all on fire
I saw a house bow to squire
I saw parson twelve feet high
I saw a cottage near the sky
I saw a balloon made of lead
I saw a coffin drop down dead
I saw a sparrow run a race
I saw two horses making lace

4. Where is the fishpond ?
a) on fire b) in the house c) in the cottage d) none of these
5. Where is the cottage?
a) sky b) balloon c) river d) house

Instruction : Identify the rhyming word for :

6. Lead
a) hat b) cat c) dead d) too

7. Too
a) lead b) dead c) true d) so

Instruction : Identify the noun :

8. Give me some Sunshine.
a) some b) give c) me d) sunshine

Instruction : Identify the Pronoun :

9. She has visited Mumbai.
a) she b) has c) visited d) Mumbai

Instruction : Identify the Adjective :

10. I have a white car.
a) I b) have c) white d) car

Instruction : Identify the Verb :

11. Call the Army.
a) call b) the c) Army d) none of these

Instruction : Identify the Gender :

12. Horse
a) mare b) horses c) she horse d) none of these

13. Dog
a) shedog b) bitch c) mare d) none of these

Instruction : Identify the Plural number :

14. Ox
a) oxes b) oxen c) oxs d) ox

15. Wolf
a) wolfs b) wolfes c) wolves d) none of these

Instruction : Find the word with correct spellings.

16. a) psychology b) psychology c) sycology d) pccgology
17. a) arkeology b) archaeology c) archeology d) archiology

Instruction : Give the synonyms of :

18. INDICTMENT
a) Arraignment b) Entrapment c) Indoctrination d) Inducement

19. ABSTEMIOUS
a) Resistant b) Temperate c) Superstitions d) Careful

20. PROBITY
a) courtesy b) Promptness c) Efficiency d) Uprightness

21. DAINTY
a) Carefree b) Feminine and happy
c) Rich and famous d) Small and graceful

22. GARISH

- a) beautifully decorated b) Boldly arranged
c) Unpleasantly gaudy d) carefully prepared

Instruction : Give the Antonyms of :

23. DESPONDENT

- a) Pleased b) Satisfied c) Infuriated d) Elated

24. REPUDIATE

- a) Prefer b) Unite c) Explain d) Accept

25. OFFICIOUS

- a) Restrained b) Unofficial c) Indifferent d) Detached

26. DENIGRATE

- a) Belittle b) Believe c) Doubt d) Praise

Instruction : Arrange the proper Alpha betical order :

27. 1) Break 2) Bronze 3) Board 4) Boil
a) 3412 b) 4231 c) 1432 d) 2341

28. 1) Silver 2) Lead 3) Gold 4) Iron
a) 3421 b) 4231 c) 1432 d) 3214

Instruction : Find the Odd man out :

29. a) Hundred b) Thousand c) Lakh d) litre
30. a) January b) February c) June d) Summer

31. What is the sum of the odd prime numbers from 1 to 20 ?
a) 87 b) 57 c) 55 d) 75

32. If $\square - 4376 = 3584$
a) 7792 b) 7960 c) 6960 d) 6792

33. How many doce close a cuboicl have?
a) 2 b) 4 c) 6 d) 8

34. The sides of a triangle are 5 cm, 6cm, 7 cm. What is its perimeter?
a) 18 cm b) 13 cm c) 11 cm d) 12 cm

35. Nine lakh nine thousand & nine.
a) 909009 b) 990009 c) 900909 d) 999009

36. What is the expanded form of 19754 ?
a) $900 + 4 + 50 + 700$ b) $1000 + 70000 + 50 + 900 + 4$
c) $9000 + 4 + 10000 + 50 + 700$ d) All are right

37. What is the sum of the numbers from 11 to 20 ?
a) 55 b) 155 c) 80 d) 210

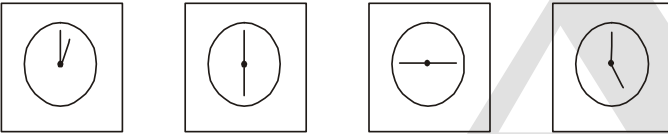
38. 18 m = how many centimetres?
 a) 1800 b) 180 c) 18 d) 18000
39. Out of 3215, 3125, 3125 & 3412 which is the smallest number?
 a) 3512 b) 3215 c) 3412 d) 3125
40. Prime factor of 63
 a) 3×21 b) $3 \times 7 \times 3$ c) $7 \times 4 \times 3$ d) 21×3
41. G.C.D of 24, 36, 60
 a) 4 b) 6 c) 13 d) 12
42. Multiply : $4 \times (-2)$
 a) 8 b) -8 c) 2 d) 6
43. Area of square =
 a) side \times side b) $2 \times$ side c) $3 \times$ side d) side \times 4
44. Simplify : $10 + 3 \times 45 \div 5$
 a) 38 b) 37 c) 39 d) -37
45. number is not even or prime
 a) 0 b) 1 c) -2 d) 2
46. Add : $-83 + 70 =$
 a) -153 b) 153 c) 13 d) -13
47. $a \times a \times a \times a \times a = ?$
 a) a^5 b) a^4 c) a^2 d) a^6
48. $\frac{3}{5} = ?$
 a) $\frac{18}{25}$ b) $\frac{10}{6}$ c) $\frac{6}{20}$ d) $\frac{6}{10}$
49. $x \propto y$ means :
 a) x is directly proportion to y b) x is not equally
 c) y is inversely proportion to x d) both (a) & (c)
50. Volume of cuboid = ?
 a) l^2 b) $2bh$ c) $2lbh$ d) lbh
51. Write in Roman numerals : 1000
 a) L b) C c) D d) M
52. Write 51 in Roman
 a) xxxxx1 b) Ll c) lL d) LIX
53. Sum of 2 angles is 180° called
 a) Complementary b) Supplementary c) boty (a) & (b) d) linear pair

54. Perimeter of square = ?
 a) $2 \times \text{side}$ b) $4 \times \text{side}$ c) $(\text{side})^2$ d) $(\text{side})^3$
55. amplitude of $1 - 31 = ?$
 a) 1 b) 0 c) 3 d) -3
56. The numbers unit place have 0,2,4,6,8. then the number is divisible by
 a) 4 b) 11 c) 3 d) 2
57. The points contain interior part of figure is called point.
 a) exterior b) points of figure c) interior d) None
58. Area of circle =
 a) $2\pi r$ b) $\frac{d}{2}$ c) $2r$ d) πr^2
59. A year having a number divisible by 4 is a year.
 a) 4 year b) 2 year c) year d) leap year
60. How is 3:45 pm written in the twenty four hour method?
 a) 3 : 45 b) 12 : 45 c) 15 : 45 d) 13 : 45
61. In the word CONSTRUCT, the number of letter C is more or less than the number of letter T, by how much ?
 a) more by 2 b) less by 1 c) zero d) more by 1
62. 2 4 5 4 3 4 3 4 7 4 8 4 2 4 8 4
 How many times in the above sequence is the number 2 followed immediately by 4?
 a) One b) Two c) Three d) Four

Direction : ABCDE FGHIJ KLMNO PQRST UVWXY

63. In the given alphabet, in which place does the letter L occur from the left end?
 a) 13th b) 10th c) 12th d) 11th
64. Find the odd man out :
 a) Bus b) Autorickshaw c) Motar car d) Train

Direction : Find the odd figure out of the given alternatives.

65. 
 a) b) c) d)

Direction : Find the odd man out from the question given below :




66. a) 36 b) 27 c) 49 d) 25





Direction : Find out the number which will occur at the place of question mark, in each series given below:

67. 636, 525, 416, 39?

- a) 24 b) 25 c) 11 d) 39

Direction : Find the missing figure in the series given below :

68. **Question figure :**    ?

Answer figure :    
 a) b) c) d)

Direction : Find the missing term in the series :

69. □ ◇ △ ? △ □ ◇ □ ◇ △

- a) ◇ □ △ b) □ △ △ c) □ △ △ d) ◇ △ □

Direction : Identify the wrong term in the given series:

70. $2 \times 1 + 7, 4 \times 2 + 1, 3 + 4 + 1 \times 2, 1 \times 6 + 5$

- a) $1 \times 6 + 5$ b) $3 + 4 + 1 \times 2$ c) $4 \times 2 + 1$ d) $2 \times 1 + 7$

71. Manohar is taller than Ravi. Abhay is shorter than Ravi. Kumar is taller than Manohar. Which of the statements given below is correct?


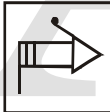


- a) Kumar is the tallest
 b) Ravi and Abhay are shorter than Manohar
 c) Abhay is the shortest
 d) All statements are correct

72. How many triangles are there in the given figure?

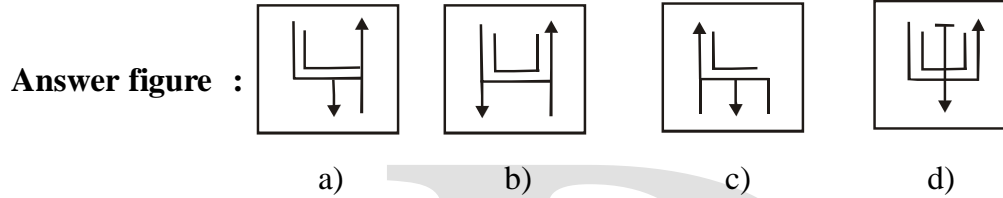
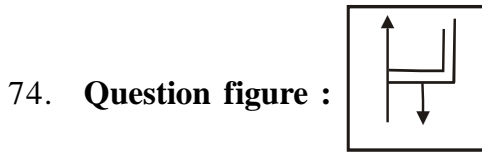


- a) 7 b) 12 c) 13 d) 10

73. **Question figure :**  **: Mirror Image**

Answer figure :    
 a) b) c) d)

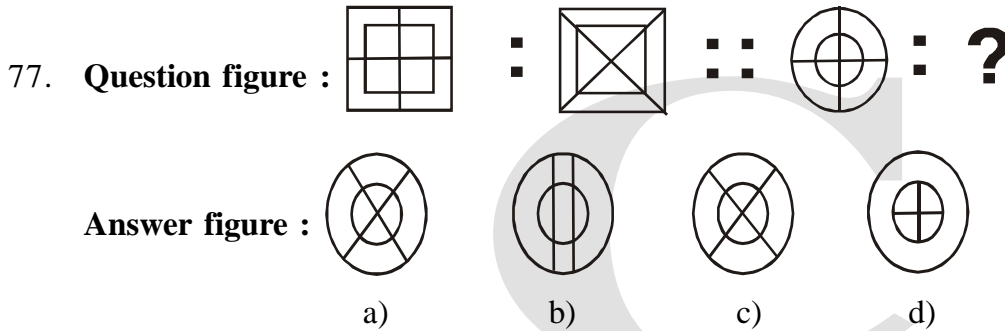
Direction : Find the mirror image of the question figures below :



Direction : Find the word in the place of question mark?

75. honey : bees :: silk : ?
 a) cloth b) sheep c) cotton d) worms
76. flower : petals :: book : ?
 a) draft b) pages c) paragraph d) lesson

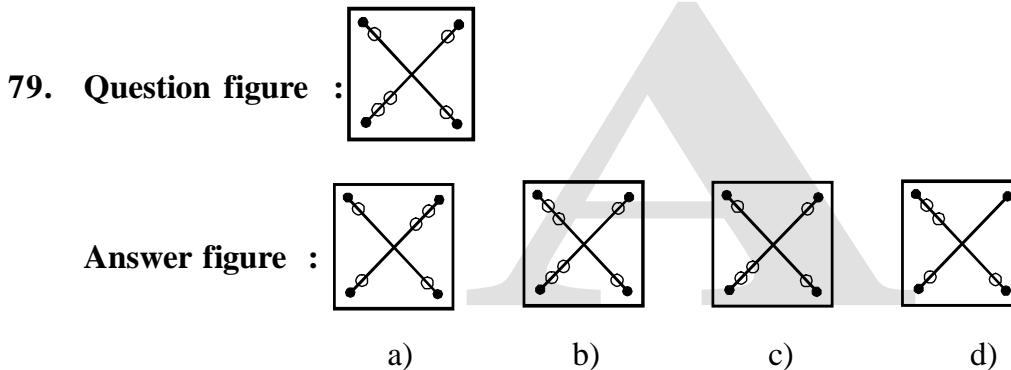
Direction : In the following questions, the 1st two figures bear some relationship to each other. The third and fourth figures bear the same relationship. One of the terms is missing. Find the missing term from amongst the four alternatives.



Direction : Find the number in the place of question mark.

78. 7 : 17 :: 17 : ?
 a) 37 b) 38 c) 39 d) 34

Direction : Out of the given group of figures find out an exact similar figure to the given question figure:



Direction : In each question below, there is a problem. It can be seen from these problems, how do you think and react? There are four alternatives given below the question. Find out the correct or proper alternative.

80. There are 33 persons in a queue. Anoop is standing at the middle place. Seema is standing to his right side at the immediate next place. What is her serial number from the left of the queue?
 a) 15 b) 16 c) 20 d) 18
81. If you travel to the north in the morning, where will the sun appear to you?
 a) Left side b) Back side c) Right side d) In front
82. If years 2003, 2004, 2005 and 2006 begin on Wednesday, Thursday, Saturday and Sunday respectively, on which day will the year 2009 begin?
 a) Wednesday b) Friday c) Friday d) Saturday
83. The length and breadth of a rectangular plot are 60m and 30 m respectively. It is to be fenced with 3 rounds of wire. What is the length of the wire required?
 a) 1800 m b) 540 m c) 180 m d) 5400 m.

Direction : Which number should occur in the place of the question mark ?

84.

24	6	27
9	3	15
21	4	?

- a) 14 b) 18 c) 22 d) 30

Direction : Find the words that belong to the following groups :

85. Mars, Mercury, Jupiter,
 a) Moon b) Sirius c) Sun d) Earth

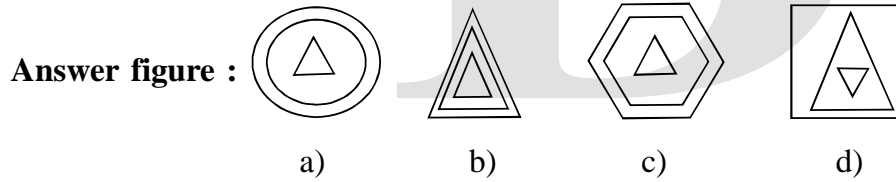
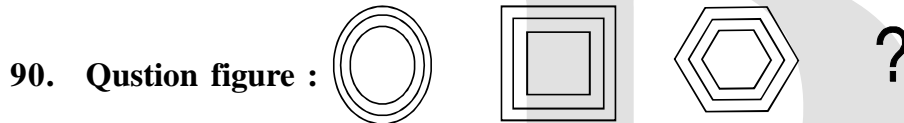
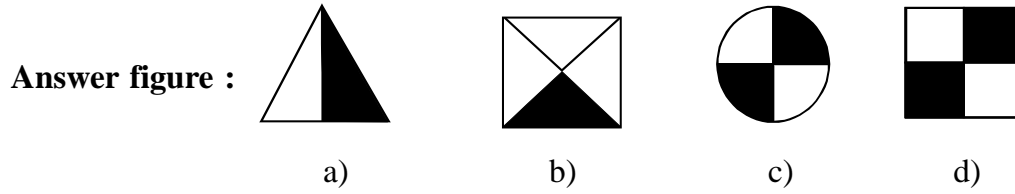
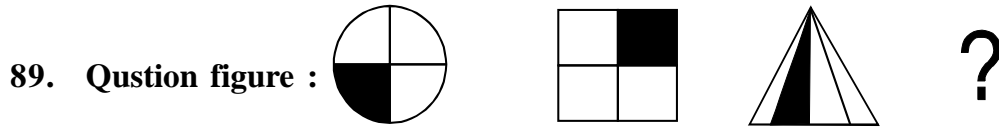
Direction : Find the number that first in the given group of numbers :

86. 3,4,5,8,7,16,9,32
 a) 10 b) 64 c) 11 d) 48

87. $\frac{1}{5}, \frac{1}{6}, \frac{1}{7}, \frac{1}{8}, ?$
 a) $\frac{1}{4}$ b) $\frac{1}{9}$ c) $\frac{1}{10}$ d) $\frac{1}{11}$

88. $\frac{9}{36}, \frac{3}{12}, \frac{5}{20}, ?$
 a) $\frac{8}{40}$ b) $\frac{1}{6}$ c) $\frac{6}{24}$ d) $\frac{7}{21}$

Direction : Find the figure that belong to the group of figures in the question ?



* Descriptive question (Compulsory)

1. Write an essay on any one of the following in 150 words. 5M
 - I) My hobby
 - II) My school
2. Write about yourself (150 words) 5 M
